



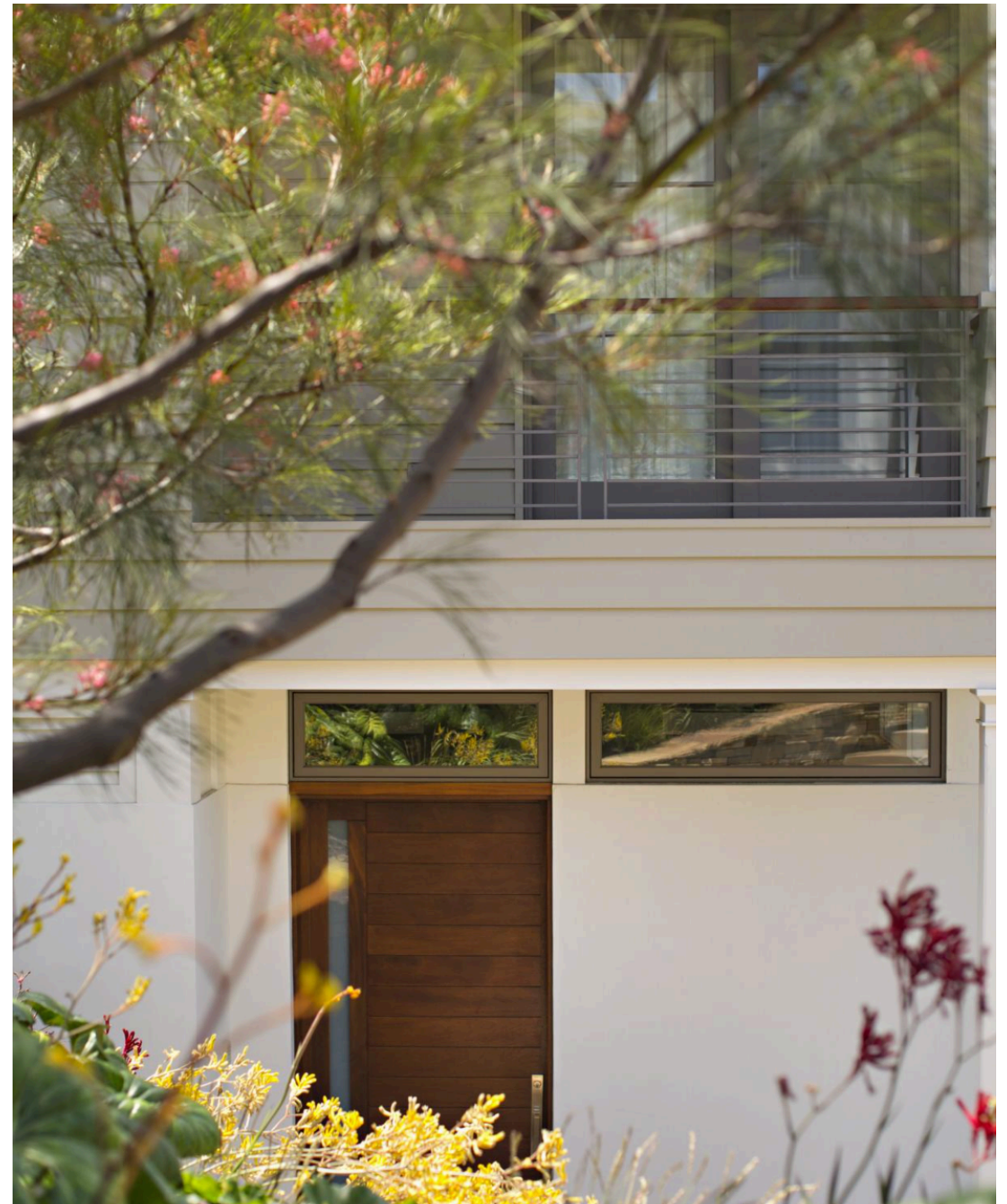
CULTURED LIFESTYLE™ M/A 2018





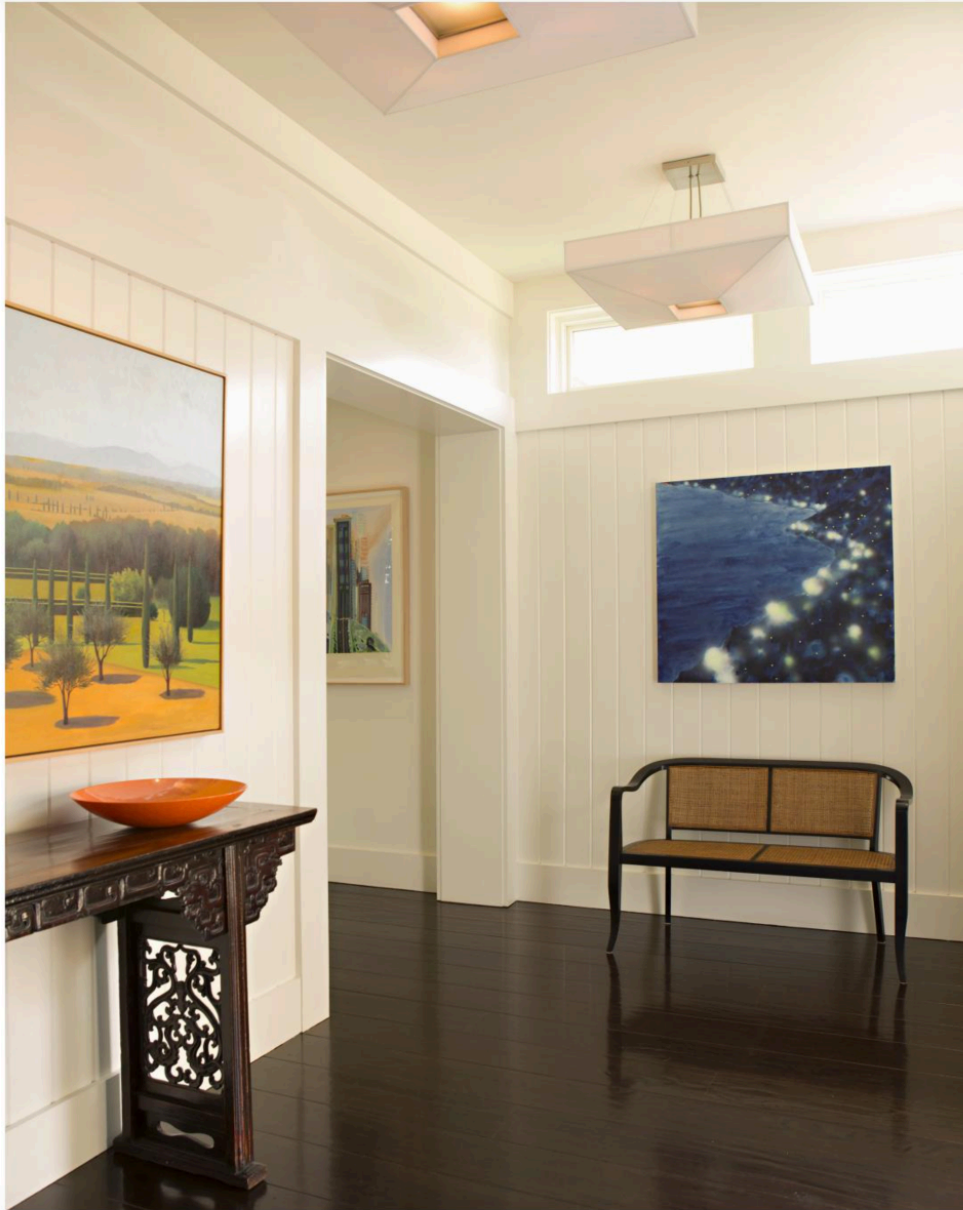
MAGICCITY

INTERIOR DESIGN: TIM CLARKE
ARCHITECT: ERIK EVENS
TEXT: CL STAFF
PHOTOGRAPHER: KARYN MILLET









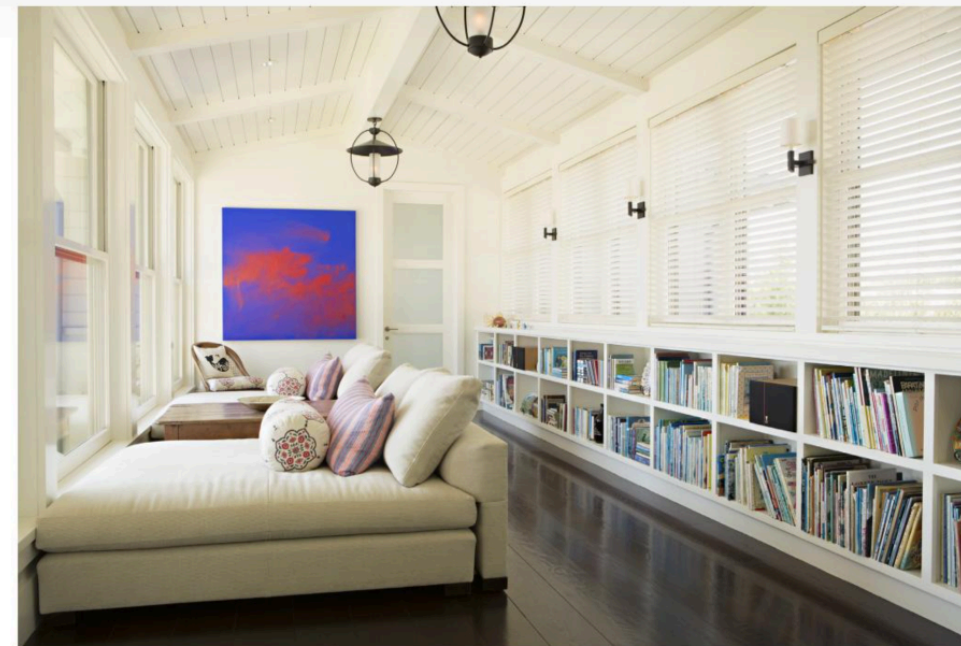
Very few people get the chance to ask the question: what thought process goes into a ground-up project. Perhaps better answered by clients—but what if grounds and fences could talk—I imagine they would liken the experience to a long distance romance.

‘Ground-up’ sites are where civility and personality are best suited to transformative thinkers who can handle projects from start to finish.









I liken it to buying your first Lamborghini. Putting all your faith in just that one mechanic/engineer, as he assembles each Lamborghini engine by hand. Each mould is used once and destroyed. Every aspect of the entire project is worked and decided on closely with the client.

Choosing an architect and a designer is just that process: where best suited transformative thinkers handle projects from start to finish, where the clients feel safe and are thrilled at its completion.

For this endeavor, Erik Evens of Evens Architects was chosen. Evens says, their original design philosophy is a deep, meaningful connection between the home and the land. "Southern California is blessed with a nurturing environment that provides extraordinary opportunities for true indoor-outdoor living. The homes we design fulfill that promise with beauty and joy."

Part II—the interior designer. Tim Clarke is an interior designer based in Santa Monica, California. He established Tim Clarke Design in 1996, which now shares its home with Tower 20, his home furnishings boutique that offers Clarke's casually elegant style to the public.



Even's appreciation of traditional architecture was nurtured during extensive travels throughout the United States and Europe. He joined KAA Design in 1998 and became a partner in the firm in 2005, overseeing a broad range of custom residential, commercial and institutional projects. In 2013, he established an independent design studio operating under the aegis of KAA and focused exclusively on traditional residential design.

To gain some perspective on design philosophy a 2016 interview makes his point: "I see the modern as addressing the current affairs in human life. We're surrounded by new technologies, new social structures, new fashions, the current zeitgeist."



"It really talks about how we're different than the generations that preceded us," says Evens. "On the other hand, the classical, I think, focuses on the eternal, on the constant human nature that we all share, on things that endure, how we are the same as our ancestors. I think in all human endeavors, and certainly when we're designing things for human beings, we need to carefully balance both modernity and the classical. I think we need to develop a point of view that says something thoughtful about that balance." ■

INTERIOR DESIGN: TIM CLARKE
ARCHITECT: ERIK EVENS



RESOURCES

LIVING ROOM: Chairs are Tim Clarke design, custom line. Solid walnut frame with a woven Kravet back fabric. Seat and back are Romo linen stripe fabric. Sofa is custom sofa, Tim Clarke design. Walnut base. Castel Linen fabric. kravet.com, Castel.com. Artwork is from the clients collection. Rug is antique wool rug from Mansour Modern. **DINING ROOM:** Rug is antique wool rug from Mansour.com. Chairs are Tim Clarke design, custom dining chairs. Solid walnut frame, white leather back and seat, polished nickel nail head. The dining table is collaboration between Tim Clark and Elizabeth Paige Smith. Custom made polished resin top table with a brush steel custom base. EPSDESIGN.COM. The wooden fixture is Michael Wilson tsunami credenza JFCHAN.COM. **ENTRANCE:** Artwork and furniture from clients collection. Light fixture from SatoriDesign.net. Custom Cazan Pendant. Pale Bamboo root paper with a brushed steel canopy. **BREAKFAST AREA:** Chairs are Palecek Rattan Armchair. Breakfast table is a

Liveedge walnut custom table, with a custom peuter steel base. Samuel Moyer Furniture – designer for the breakfast table. Custom built in banquet in kravet vinyl fabric. Window coverings are custom roman shades, white linen fabric. **FAMILY ROOM:** Custom Tim Clarke Design sectional sofa, made in a corragio linen fabric. Holly Hunt leather. Coffee table Tim Clarke design custom in solid walnut, white marble inset top. Rug is a custom wool stripe rug by Decorative Carpets. **STAIRWAY:** Custom Stair runner, wool carpet by Decorative Carpets. Artwork is client collection. **RETREAT:** The day beds are Isola lounge by Vioski, Castel natural linen fabric. Light fixtures, above bookshelf are Palmer Hargrave sconces, peuter bronze finish with linen shade **BEDROOM:** Bedding is John Robshaw bedding. **Veranda:** Sofas are Sutherland Peninsula collection, two seater sofa and the lounge chairs are peninsula collection. Light fixture, Teka lighting large beacon stemmount pendant.







